

## Thousand Cankers Disease

Dieback and mortality of eastern black walnut (*Juglans nigra*) in several Western States have become more common and severe during the last decade. A tiny bark beetle is creating numerous galleries beneath the bark of affected branches and the main stem, resulting in fungal infection and canker formation. The large numbers of cankers associated with dead branches and the stem suggest the disease's name—*thousand cankers disease*.

The principal agents involved in this disease are a newly identified fungus (*Geosmithia morbida*) and the walnut twig beetle (*Pityophthorus juglandis*). Both the fungus and the beetle only occur on walnut species and on a closely related tree called wingnut (*Pterocarya* sp.). Infested trees can die within 3 years of initial symptoms.

Thousand cankers disease has been found in nine Western States (figure 1). Since 2010, the fungus and the beetle have also been found east of the Great Plains. This disease is expected to spread in eastern forests because of the widespread distribution of eastern black walnut, the susceptibility of this tree species to the disease, and the capacity of the fungus and beetle to invade new areas and survive under a wide range of climatic conditions in the West.

### Disease Symptoms

The three major symptoms of this disease are branch mortality, numerous small cankers on branches and the bole, and evidence of tiny bark beetles. The earliest symptom is yellowing foliage that progresses rapidly to brown wilted foliage, then finally branch mortality (figure 2). The fungus causes distinctive circular to oblong cankers in the phloem under the bark, which eventually kill the phloem and cambium (figure 3). The bark surface may have no symptoms, or a dark amber to black stain or cracking of the bark may occur directly above a canker. Numerous tiny bark beetle entrance and exit holes are visible on dead and dying branches (figure 4), and bark beetle galleries are often found within the cankers. In the final stages of disease, even the main stem has beetle attacks and cankers.

### *Geosmithia morbida*

Members of the genus *Geosmithia* have not been considered to be important plant pathogens, but *Geosmithia morbida* appears to be much more virulent than related species. Aside from causing cankers, the fungus is inconspicuous. Currently, either culturing on an agar

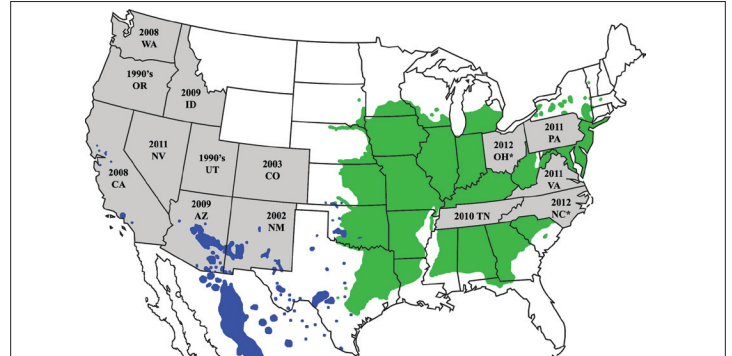


Figure 1. Thousand cankers disease occurs in nine Western and five Eastern States (shaded gray); the year in which the disease was confirmed is noted. Since 2010, TCD has been confirmed in PA, TN, and VA, whereas the beetle alone and the pathogen alone have been found in OH and NC, respectively (denoted with asterisks). The map shows the native ranges of eastern black walnut (dark green) and four western black walnut species (blue). Eastern black walnut is widely planted in the West, but this map does not depict these western locations.



Figure 2. Wilting black walnut in the last stages of thousand cankers disease.



Figure 3. Small branch cankers caused by *Geosmithia morbida*.

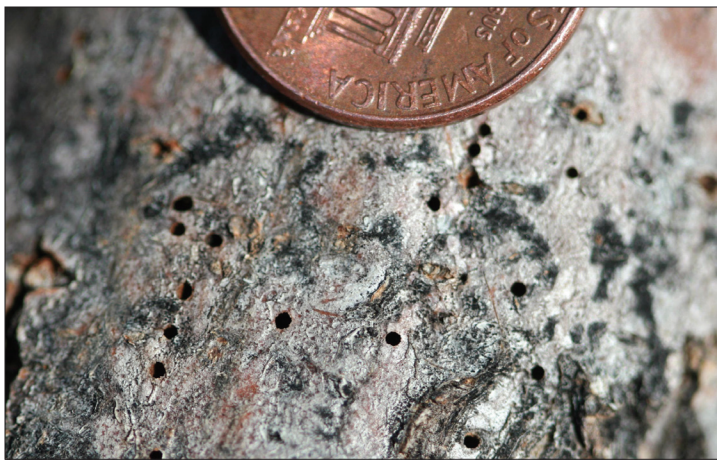


Figure 4. Exit holes made by adult walnut twig beetles.

medium or DNA analysis is required to confirm its identity. Adult bark beetles carry fungal spores that are then introduced into the phloem when they construct galleries. Small cankers develop around the galleries; these cankers may enlarge and coalesce to completely girdle the branch or stem. Trees die as a result of these canker infections that form at each of the thousands of beetle attack sites.

## Walnut Twig Beetle

The walnut twig beetle is native to Arizona, California, and New Mexico. It has invaded Colorado, Idaho, Nevada, Oregon, Utah, and Washington where eastern black walnut has been widely planted. Since 2010, established populations have also been detected in Pennsylvania, Tennessee, and Virginia; North Carolina and Ohio also likely harbor populations, pending confirmation. Historically, the beetle has not caused significant branch mortality by itself. Through its association with this newly identified fungus, it appears to have greatly increased in abundance and distribution. Adult beetles are very small (1.5 to 2.0 mm long or about  $\frac{1}{16}$  in) and are reddish brown in color (figure 5). This species is a typical-looking bark beetle that is characterized by its very small size and four to six concentric ridges on the upper surface of the pronotum (the shield-like cover behind and over the head) (figure 5A). Like most bark beetles, the larvae are white, C-shaped, and found in the phloem. For this species, the egg galleries created by the adults are horizontal (across the grain) and the larval galleries tend to be vertical (along the grain) (figure 6).

## Survey and Samples

Visually inspecting walnut trees for dieback is currently the best survey tool for detecting the disease in the Eastern United States. A pheromone-baited trap placed near (but never on) walnut trees is also available for detecting the beetle (<http://www.ipm.ucdavis.edu/PMG/menu.thousandcankers.html>). Look for declining trees with the



Figure 5. Walnut twig beetle: top view (A) and side view (B).



Figure 6. Walnut twig beetle galleries under the bark of a large branch.

symptoms described above. If you suspect that your walnut trees have thousand cankers disease, collect a branch 2 to 4 inches in diameter and 6 to 12 inches long that has visible symptoms. Please submit branch samples to your State's plant diagnostic clinic. Each State has a clinic that is part of the National Plant Diagnostic Network (NPDN). They can be found at the NPDN Web site ([www.npdn.org](http://www.npdn.org)). You may also contact your State Department of Agriculture, State Forester, or Cooperative Extension Office for assistance.

### Prepared by:

Steven Seybold, Research Entomologist, U.S. Forest Service, Pacific Southwest Research Station

Dennis Haugen, Forest Entomologist, and Joseph O'Brien, Plant Pathologist, U.S. Forest Service, Northeastern Area State and Private Forestry

Andrew Graves, Forest Entomologist, U.S. Forest Service, Region 3 State and Private Forestry

### Photographs:

Figure 1: Andrew Graves

Figure 2: Manfred Mielke, U.S. Forest Service

Figures 3, 4, 6: Whitney Cranshaw, Colorado State University, [www.forestryimages.org](http://www.forestryimages.org)

Figure 5: Steve Valley, Oregon Department of Agriculture

USDA is an equal opportunity provider and employer.



### Published by:

USDA Forest Service  
Northeastern Area  
State and Private Forestry  
11 Campus Boulevard  
Newtown Square, PA 19073  
[www.na.fs.fed.us](http://www.na.fs.fed.us)